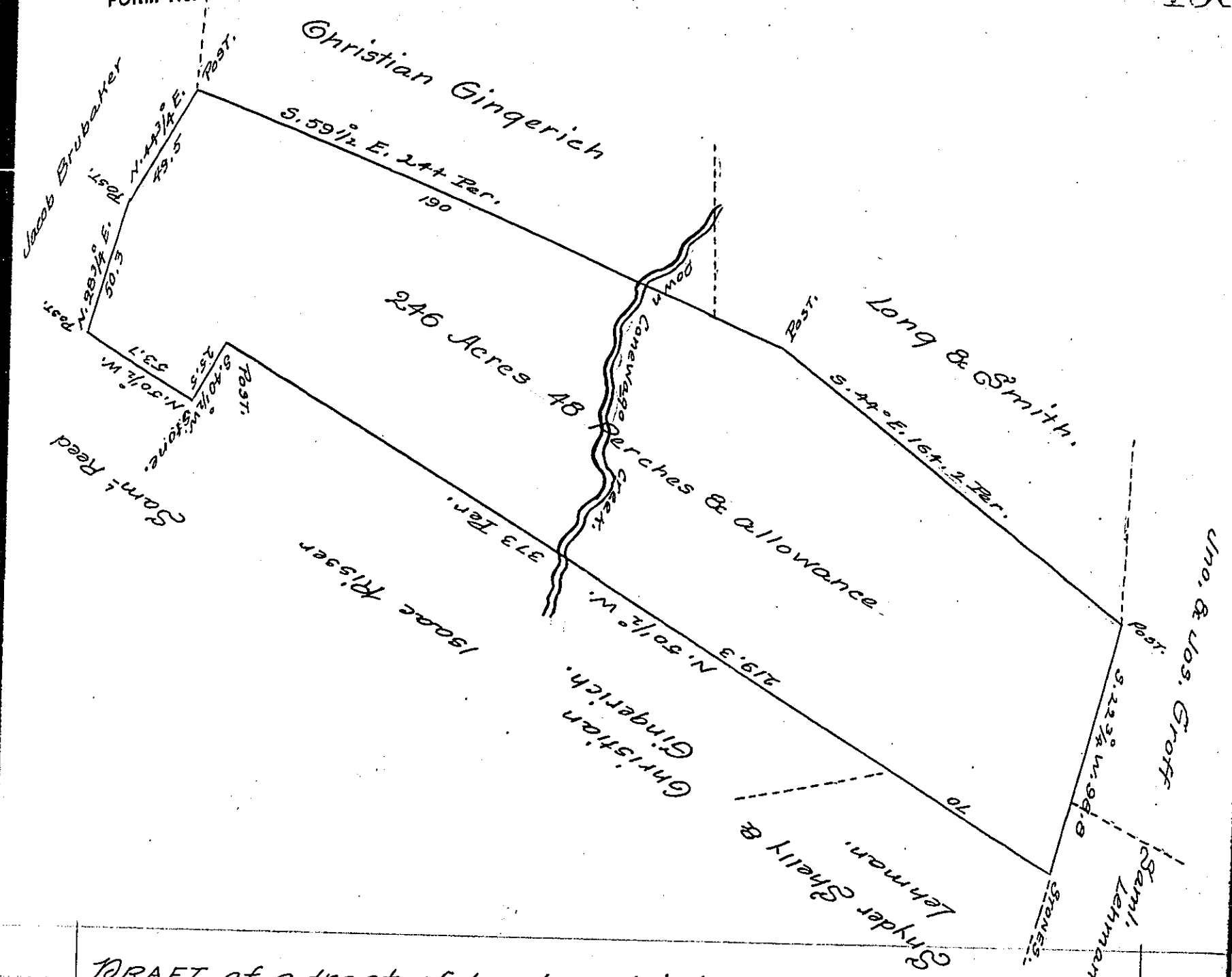


FORM No. 1.



DRAFT of a tract of land containing 246 Acres 48 perches and allowance of six per cent. for roads &c. Situate in Londonderry Township County of Lebanon, Surveyed the 21st day of November A.D. 1873 in pursuance of a warrant granted to Christian Gingerich, Jacob S. Engle, Reuben Greiner and Benjamin Shelly dated the 11th day of November A.D. 1873.

G. H. Hoffer

To Robert B. Beath,
Surveyor General of Penn.

Approved November 28th 1873.

Martin Meily Surveyor,
For Lebanon County.

IN TESTIMONY that the above is a copy of the original remaining on file in the Department of Internal Affairs of Pennsylvania, made conformably to an Act of Assembly approved the 16th day of February, 1833, I have hereunto set my Hand and caused the Seal of said Department to be affixed at Harrisburg, this Eighth day of March 1905

Joseph R. Pearson
Secretary of Internal Affairs.